



Folding-arm
awning

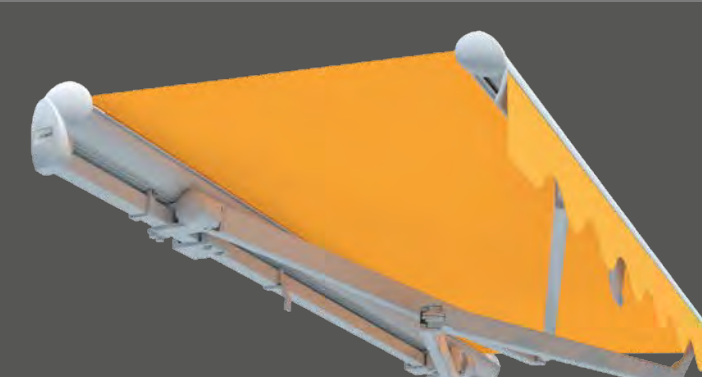


Family
Design



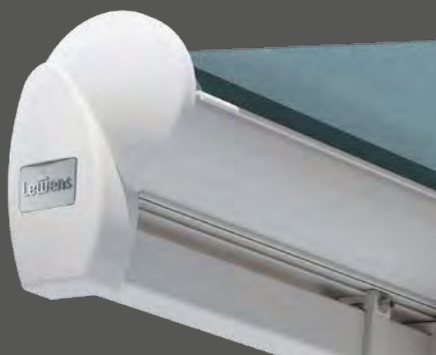
Just
enjoy life!

Lewens
MARKISEN



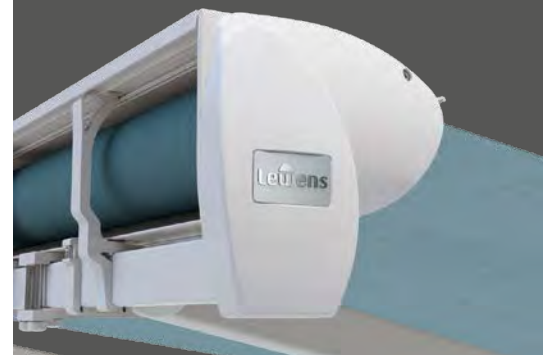


Family Design – shapely and technically perfect Designer awning for large patios and outdoor seating areas



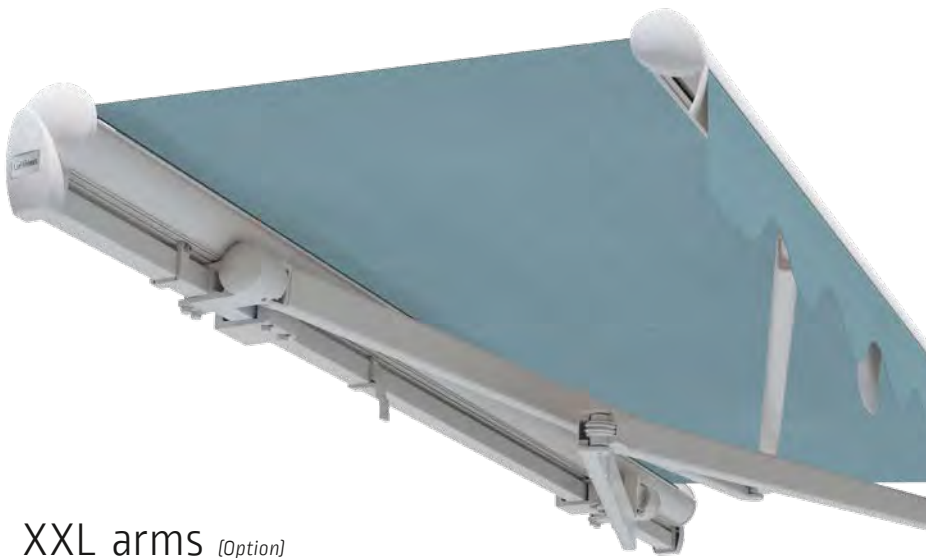
Open type

On the basic Family Design type, the awning fabric roller is exposed ("open"). Round end caps at the sides and the fabric cover shell on the front of the fabric roller give the awning a harmonious appearance.



The optimum in comfort

- Width of 1 unit max. 700 cm, joined system max. 1950 cm, drop max. 400 cm
- "Designer" front profile
- Electric motor
- Options:
 - Radio motor/radio remote control,
 - automatic weather sensor,
 - LED lighting,
 - radiant heater,
 - support legs

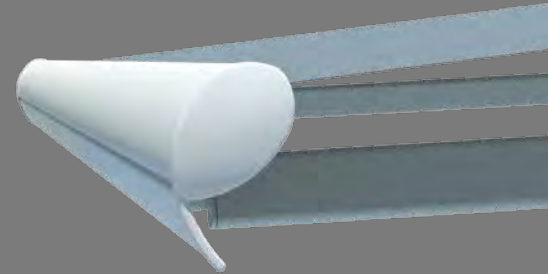


XXL arms *(Option)*

If only a small width is available for the awning and yet a large drop is required, the Family Design with its XXL arms, which overlap in two planes, is the perfect solution. Can be supplied for all types: Open, Rain Cover and Encased.



As the designer model among the back bar awnings, the Family Design adds a touch of style. The elegant front profile with smoothly rounded ends creates a modern façade. As well as superior Lewens quality and ease of operation, the awning comes with a range of attractive optional features.



Rain Cover type

The protective cover on the Family Design Rain Cover type protects the awning against dust, rain and other effects of the weather when retracted.



Encased type

Equipped with a protective cover and back plate, the Encased type of the Family Design provides secure all-round protection for the fabric roller.

Family Design

Equipment and technical features



Manufactured and assembled in Germany
TÜV-tested safety
Quality and technology CE-compliant



Type	Open	Rain Cover	Encased
Back bar awning – standard dimensions, retracted (H x D)	182 x 215 mm	178 x 220 mm	178 x 220 mm
Unit widths (max.)			
1 unit (single panel)	700 cm	700 cm	700 cm
2 units (linked system with continuous awning)	1.200 cm	–	–
2 units/3 units (linked system with slit cover)	1.300 cm/1.950 cm	1.300 cm/1.950 cm	1.300 cm/1.950 cm
Drops			
Arm lengths 150 / 200 / 250 / 300 / 350/400 cm	■	■	■
Special arm lengths	□	□	□
Drive			
Electric motor (for wall switch)	■	■	■
Radio motor	□	□	□
Crank drive	□	□	□
Frame colours			
29 Lewens standard frame colours	■	■	■
Natural silver [E6/EV 1 anodized, small components RAL 9006]	■	■	■
Additional RAL, special colours and effect finishes	□	□	□
Awning fabrics from the LEWENS collection			
Branded acrylic (spun-dyed, ultra fade resistant)	■	■	■
Branded polyester/recycled polyester (spun-dyed, ultra fade resistant)	□	□	□
Tenara quality sewing yarn	■	■	■
Ultrasonic seam welding	□	□	□
Valance			
without valance	■	■	■
with valance	□ [XXL-arms: ■]	□ [XXL-arms: ■]	□ [XXL-arms: ■]
Options			
1 Radio motor + radio remote control	□	□	□
2 Automatic weather sensor (sun, wind, rain)	□	□	□
3 Lighting: LED spot bar	□	□	□
4 Radiant heater (not with 6, 7; with 3 only wall attachment)	□	□	□
5 Support legs (not with 2, 7)	□	□	□
8 XXL-arms (dependent on width/drop)	□	□	□
Attachment			
Wall	■	■	■
Ceiling/rafters	□	□	□

■ Standard □ Option – not available

Possible dimensions and restrictions along with the complete range of electronic accessories can be found in the technical data in the current Lewens price list.

Your stockist will be happy to advise you:



www.lewens-markisen.de

Subject to technical alterations. Date: 06/2023