



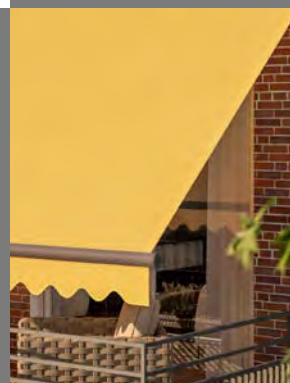
Folding-arm
awning

Family
Classic



Just
enjoy life!

Lewens
MARKISEN



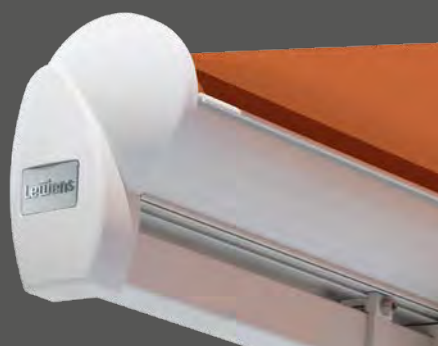


Vario Valance (Option)

The Vario Valance offers variable shade from the sun and glare protection, especially when the sun is low in the sky, without any loss of headroom under the awning.

Family Classic – the classic awning

Versatile and practical for patios and outdoor seating areas



Open type

On the basic Family Classic type, the awning fabric roller is exposed ("open"). Round end caps at the sides and the fabric cover shell on the front of the fabric roller lend the awning a harmonious appearance.



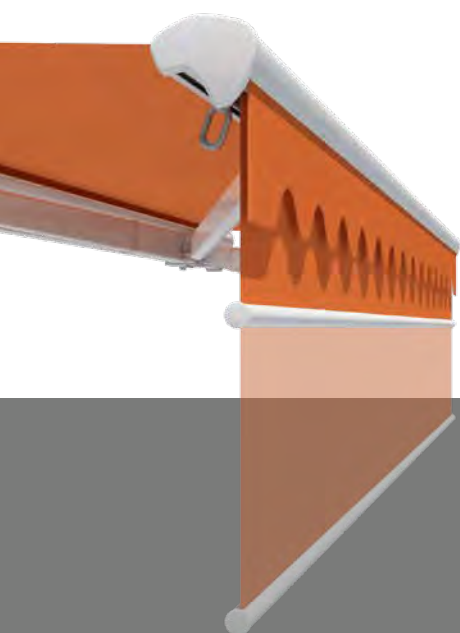
A host of extra features

- Width of 1 unit max. 700 cm, joined system max. 1950 cm, drop max. 400 cm
- Supplied as standard with classic valance
- Electric motor
- Options:
Radio motor/
radio remote control,
automatic weather sensor,
LED lighting,
radiant heater,
support legs,
Vario Valance,
Lewens-Matik



Lewens-Matik (Option)

An additional crank gear mechanism permits smooth adjustment of the awning pitch to adapt it to the position of the sun.



The Family Classic folding arm awning with its typical valance creates a summer-like atmosphere on the patio or balcony. Available in formats up to 700 cm (as a single unit) and up to 1950 cm as a joined system, this awning is perfect even for large areas. A user-friendly awning boasting proven Lewens' quality, the Family Classic can be enhanced by a number of interesting options.

Rain Cover type

The protective cover on the Family Classic Rain Cover type protects the awning against dust, rain and other effects of the weather when retracted.



Encased type

Equipped with a protective cover and back plate, the Encased type of the Family Classic provides secure all-round protection for the fabric roller.

Family Classic

Equipment and technical features



Manufactured and assembled in Germany
TÜV-tested safety
Quality and technology CE-compliant



Family Classic

Family Classic

Family Classic

Type	Open	Rain Cover	Encased
Back bar awning – standard dimensions, retracted (H x D)	182 x 200 mm	178 x 200 mm	178 x 200 mm
Unit widths (max.)			
1 unit (single panel)	700 cm	700 cm	700 cm
2 units (linked system with continuous awning)	1.200 cm	–	–
2 units/3 units (linked system with slit cover)	1.300 cm/1.950 cm	1.300 cm/1.950 cm	1.300 cm/1.950 cm
Drops			
Arm lengths 150 / 200 / 250 / 300 / 350 / 400 cm	■	■	■
Special arm lengths	□	□	□
Drive			
Electric motor (for wall switch)	■	■	■
Radio motor	□	□	□
Crank drive	□	□	□
Frame colours			
29 Lewens standard frame colours	■	■	■
Natural silver (E6/EV 1 anodized, small components RAL 9006)	■	■	■
Additional RAL, special colours and effect finishes	□	□	□
Awning fabrics from the LEWENS collection			
Branded acrylic (spun-dyed, ultra fade resistant)	■	■	■
Orchestra MAX (branded acrylic, water repellent), up to 600 x 350 cm *	□	□	□
Branded polyester/recycled polyester (spun-dyed, ultra fade resistant)	□	□	□
Tenara quality sewing yarn	■	■	■
Ultrasonic seam welding	□	□	□
Valance			
without valance	–	–	–
with valance	■	■	■
Options			
1 Radio motor + radio remote control	□	□	□
2 Automatic weather sensor (sun, wind, rain)	□	□	□
3 Lighting: LED spot bar	□	□	□
4 Radiant heater (not with 6, 7; with 3 only wall attachment)	□	□	□
5 Support legs (not with 2, 7)	□	□	□
6 Vario Valance, up to 600 cm wide (not with 4, 7)	□	□	□
7 Lewens-Matik, up to max. 600 x 350 cm (not with 3, 4, 5, 6)	□	□	□
Attachment			
Wall	■	■	■
Ceiling/rafters	□	□	□

Possible dimensions and restrictions along with the complete range of electronic accessories can be found in the technical data in the current Lewens price list.

■ Standard □ Option – not available

* pitch angle $\geq 10^\circ$ recommended, always ultrasonic seam welding

Lewens
MARKISEN



www.lewens-markisen.de

Your stockist will be happy to advise you:

Subject to technical alterations. Date: 07/2024