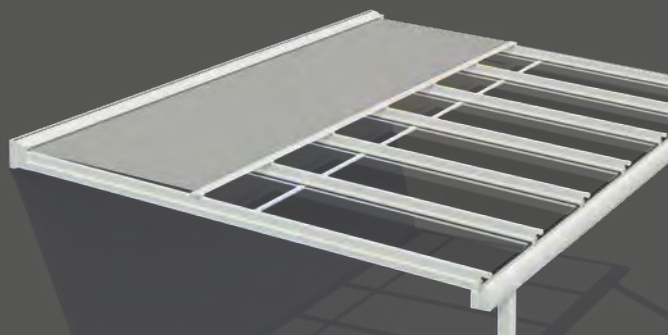


Glass roof system

Murano  
Integrale

Just  
*enjoy* life!

**Lewens**  
MARKISEN







*Murano Integrale Overhang type  
with laterally flush posts  
[style Ü1]*

## Murano Integrale – glass roof with awning

Optimal protection with integral sunshade



### Overhang type (Ü)

*with recessed posts*

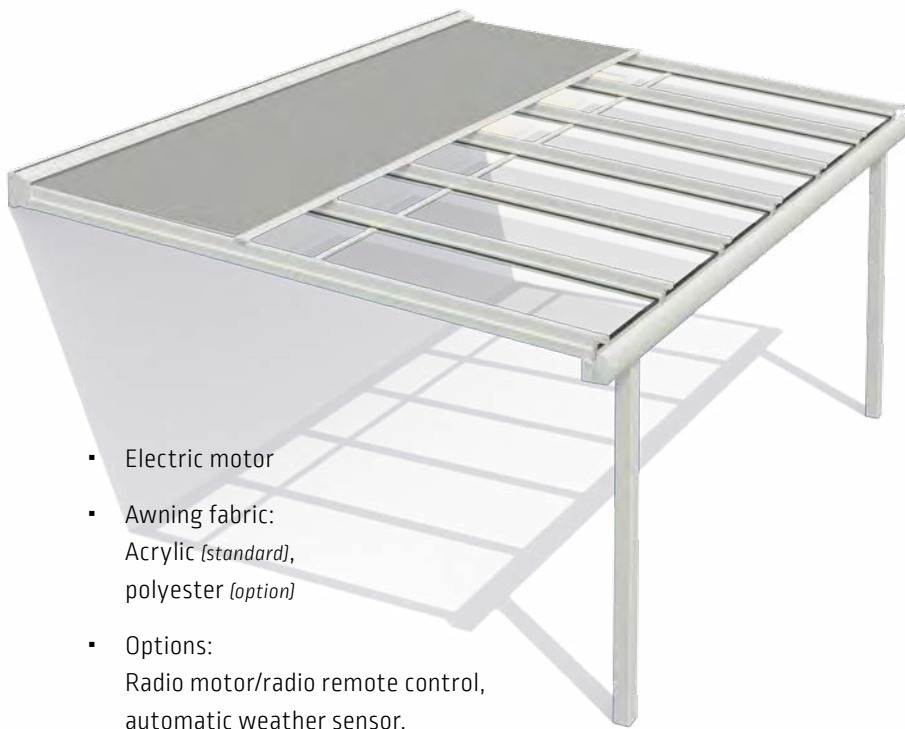
*Here the posts can stand e.g. on the patio with the roof overhang taken out over them. Rainwater is drained via a water spout (standard) or optionally via a stainless steel rain chain or downpipes.*





## Customised protection from the elements

- Width max. 700 cm, depth max. 500 cm
- With 2 to 3 posts *(depending on load and type)*
- Optional roof pitch: 3° to 20° (stepless)

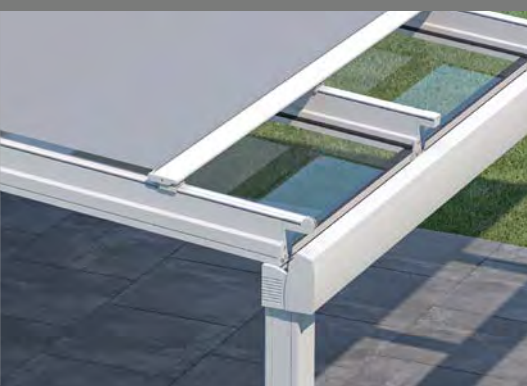


- Electric motor
- Awning fabric:  
Acrylic *(standard)*,  
polyester *(option)*
- Options:  
Radio motor/radio remote control,  
automatic weather sensor,  
LED lighting,  
radiant heater



Murano Integrale offers variable shelter from the rain, the temperature and the sun-light. With an awning integrated into the wall profile, this model combines the transparency and protection of a glass roof with the advantages of a high-quality awning for adjustable shade from the sun. Various types and styles with posts in line with the front profile and flush or positioned inwards laterally are available to choose from, even for this generously proportioned glass roof.

*Flush type  
with laterally recessed posts  
[style B2].*



### Flush type (B)

*with front-facing posts*

*The posts are in line with the gutter  
for a compact, modern look.  
Rainwater is drained via the rafters,  
gutter and down the inside of the post.*

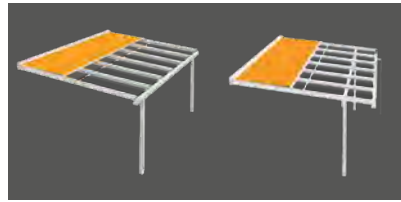


# Murano Integrale

Equipment and technical features



Manufactured and assembled in Germany  
TUV-tested safety  
Quality and technology CE-compliant



Styles	Flush (B) Type	Overhang (Ü) Type
	B1, B2 B3	Ü1, Ü2, Ü3
– Posts laterally external	B1	Ü1
– Posts laterally recessed	B2	Ü2
– with 3rd support	B3	Ü3
– Overhang (inner edge of post – outer edge of gutter)	–	30 - 100 cm
– Reinforcement: steel (s)	...s	...s
<b>Dimensions (max.)</b>		
Width, 1 unit (single field)	700 cm	700 cm
Depth (type B: to inner edge of post; type Ü: to outer edge of gutter)	500 cm	500 cm
Pitch angle, stepless (at least 5° recommended)	3° - 20°	3° - 20°
Rafter spacings (max., depending on type, roof size, load)	120 cm	120 cm
Post height 240 cm	■	■
Longer posts	□	□
<b>Rainwater drainage</b>		
Downpipe integrated into post	■	–
Downpipe, external in front of post	–	□
Water spout (1 item)	–	■
<b>Glazing</b>		
for laminated safety glass (LSG, clear) or twin-wall sheets	!	!
<b>Drive</b>		
Electric motor (for wall switch)	■	■
Radio motor	□	□
<b>Frame colours</b>		
29 Lewens standard frame colours	■	■
Additional RAL, special colours and effect finishes	□	□
<b>Awning fabrics from the LEWENS collection</b>		
Branded acrylic (spun-dyed, ultra fade resistant)	■	■
Branded polyester (spun-dyed, ultra fade resistant); no recycled polyester	□	□
Tenara quality sewing yarn	■	■
Corner reinforcement and lateral seam (10 cm)	■	■
<b>Options</b>		
Radio motor + radio remote control	□	□
Automatic weather sensor (sun, wind, rain)	□	□
Lighting - LED strips, LED spot bar	□	□
Radiant heater (only wall attachment)	□	□
Glass joint	□	□
Additional drainage (downpipe integrated into post)	□	–
Rain chain/additional water spout or downpipe	–	□
Lateral connection profile/various profiles/support frame	□	□

Possible dimensions and restrictions along with the complete range of electronic accessories can be found in the technical data in the current Lewens price list.

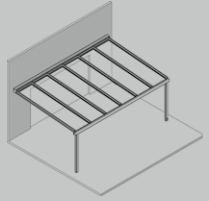
■ Standard □ Option  
– not available

! Not included in scope of supply

## Types and styles

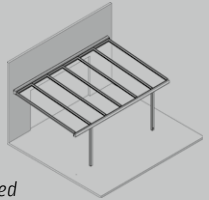
**B1** flush, external

**B1s** as B1, with steel reinforcement



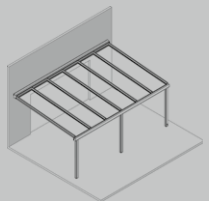
**B2** flush, laterally recessed

**B2s** as B2, with steel reinforcement



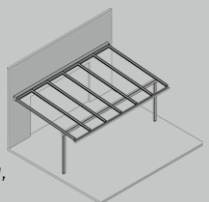
**B3** as B1, with 3<sup>rd</sup> support

**B3s** as B3, with steel reinforcement



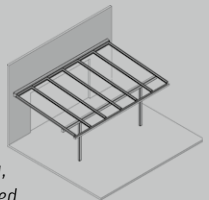
**Ü1** rafter overhang, external

**Ü1s** as Ü1, with steel reinforcement



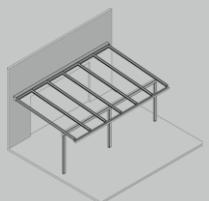
**Ü2** rafter overhang, laterally recessed

**Ü2s** as Ü2, with steel reinforcement



**Ü3** as Ü1, with 3<sup>rd</sup> support

**Ü3s** as Ü3, with steel reinforcement



Your stockist will be happy to advise you:

**Lewens**  
MARKISEN



www.lewens-markisen.de

Subject to technical alterations. Date: 07/2024